



# AWQUA FAST FACTS

The Kansas Geological Survey's Aquifer Water Quality Assessment for Kansas (AWQUA) program monitors and reports on aquifer water resources in our state by testing groundwater, compiling data, and developing communication pathways.

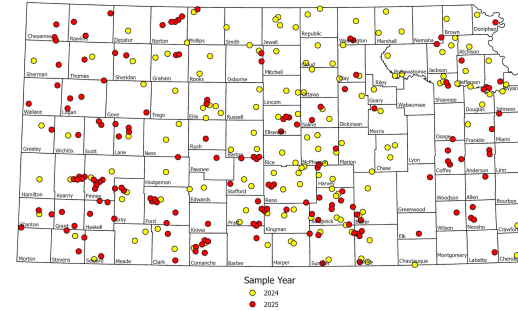
## Groundwater Testing

<b>317</b> Wells sampled	<b>47</b> Different chemicals tested
<b>86</b> Wells tested for PFAS*	<b>166</b> Wells tested for pesticides

**!** **10%** Of wells contain nitrate exceeding the contaminant limit      **15%** Of wells contain detectable PFAS

\* poly- and perfluoroalkyl substances

## Data Collection & Database Development



**35,277**

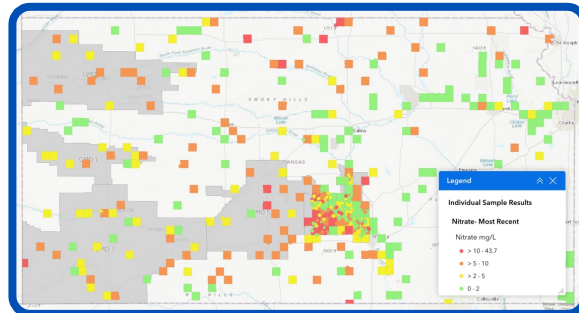
Groundwater quality data points (left) logged in database, which serves as a repository for other agencies and studies

## Public Data Access

Groundwater quality mapper launched (right); data explorer tool in development



Access the data map here!



## Education & Outreach

- 10** Presentations to state water stakeholder groups
- 4+** Publicly available educational resources & activities
- 20** K-12 teachers trained in groundwater education
- 3** Statewide NGSS-aligned teacher short courses



AWQUA program story map



AWQUA program web page



AWQUA program open-file report



Aquifers & Kansas story map



Aquifer education resources